

Address

Alexandre Colot, K-Team S.A.
Ch. de Vuasset, CP 111
1028 Préverenges
Suisse

email: info@hemisson.com

Url: www.hemisson.com

PRELIMINARY :

- The contents of this manual are subject to change without notice.
- All efforts have been made to ensure the accuracy of this manual.
However, should any error be detected, please inform K-TEAM S.A.
- The above notwithstanding, K-TEAM S.A. can assume no responsibility for any error in this manual.

MINIMUM CONFIGURATION :

- Win 95/98/NT 4.0/2000/Me/XP
- Intel Pentium 150MHz or equivalent
- 16Mo RAM
- 5Mo disk space
- Screen Resolution 640x480
- Serial port or USB-Serial bridge.

TABLE OF CONTENTS



1	Introduction	3
2	Warning	4
3	Install	5
3.1	Download	5
3.2	Installation	5
4	Use	9
5	Firmware Upgrade	11
6	Uninstall	12

1 INTRODUCTION



Microchip PIC microprocessors PICs are made to be programmed with an external programmer.

To avoid user to buy an unnecessary programmer, we developed a serial port upload interface.

This manual detail the installation and the use of this software. We strongly recommend you to read the Warning chapter because a misuse of Hemisson Uploader can gravely endommage Hemisson and imply a return to K-Team not covered by warranty.

2 WARNING



As previously written, Microchip did not foresee upload via serial port during development of PIC processor. Hence, the information sent by Hemisson Uploader are processed by a code embedded in Hemisson Flash called "Bootloader". Erasing the "Bootloader" may happen in case of mismanipulation or programming error. In this case, Hemisson Uploader would no more work and you would need to upload the "Bootloader" with an external programmer either using In-Circuit-Debug or any external programmer.

If you use only firmware (.hex file) downloaded from K-Team support page, any incident happening with your FLASH will be covered by warranty.

If you upload your own compiled program, please take care of the following rule to avoid problems :

- you must not write in the memory area between 0x1F00 and 0x1FFF because this is the place where the "Bootloader" stands.

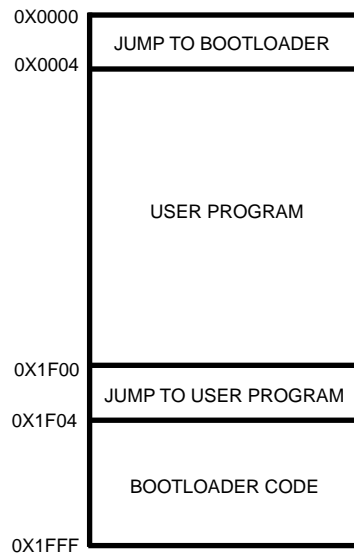


Figure 2.1: Hemisson Memory Space

If you overwrite the "Bootloader" and if you have an In-Circuit-Debug interface or an external programmer, you can upload the "Bootloader.hex" available on Hemisson web site.

3 INSTALL

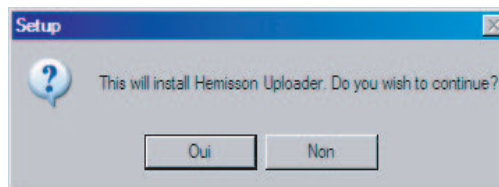


3.1 Download

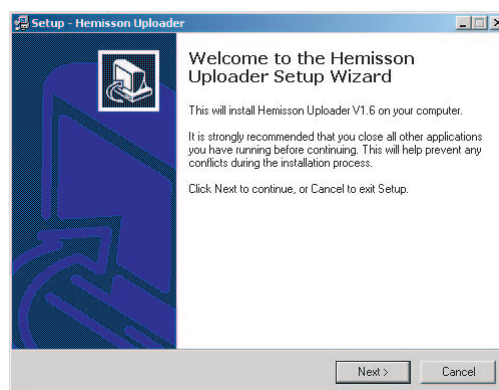
Hemisson Uploader is a free software, you can get it freely at: <http://www.hemisson.com/English/support.html>. Download the install file on your computer before to go to next step.

3.2 Installation

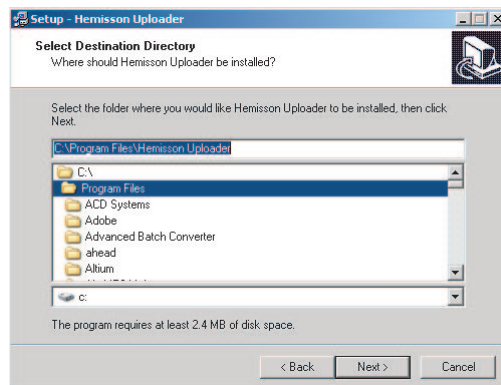
- Start installing by double-clicking on file *setup.exe*.



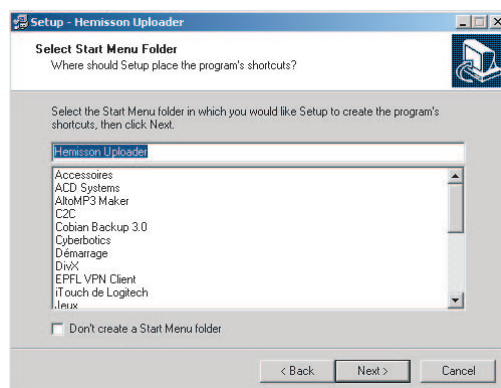
- Click on "Yes" to confirm.



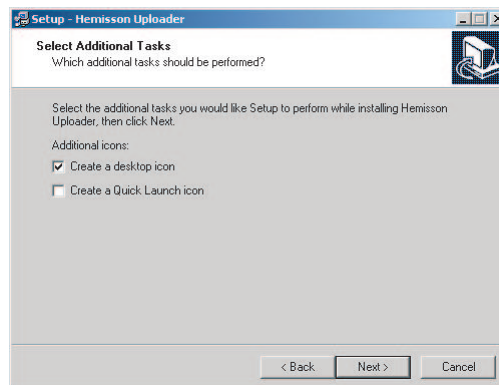
- Click on "Next".



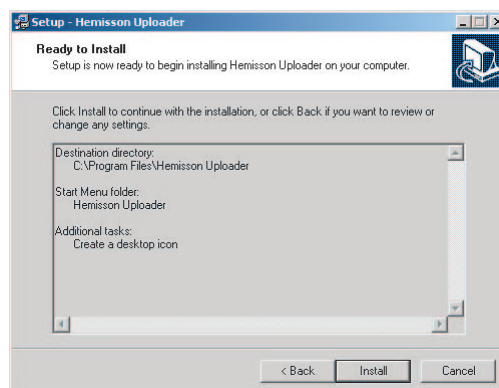
- Select the install directory and then click on "Next". By default installation take place in directory C:\Program Files\Hемisson Uploader.



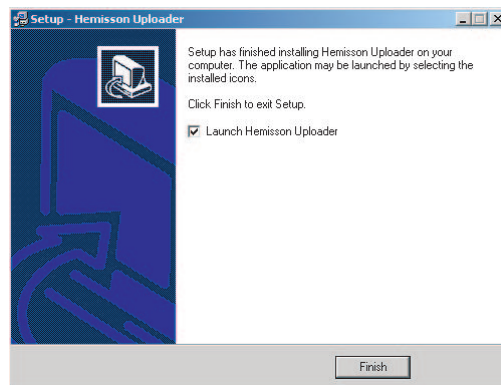
- Tick the box la case "Don't create a Start Menu Folder" if you do not wish that the install program create a folder Hемisson in your program bar.



- Tick the box "Create a Desktop icon" to create a shortcut "Hemisson Uploader" on your desktop. Tick the box "Create a Quick Launch icon" if you wish to add a shortcut close to Windows "Start" button.



- Click on "Install" to confirm all parameters and start installation. You can correct parameters by coming back to previous pages with "Back" button.



- Tick the box "Launch Hemisson Uploader" to immediately start it. Click on "Finish" button. The installation is now done.



Start Hемisson Uploader from any shortcut select on installation (Quick Launch, Desktop or start menu).

The following windows will appear:



Figure 4.1: Hемisson Uploader Interface

- Select the (.hex) file to upload in Flash memory with button "Search...".
- Switch off Hемisson (Switch On/Off in Off position).
- Connect robot to computer thanks to the RS232 cable provided in your pack.

- Configure robot in Pgm mode (see drawing below).

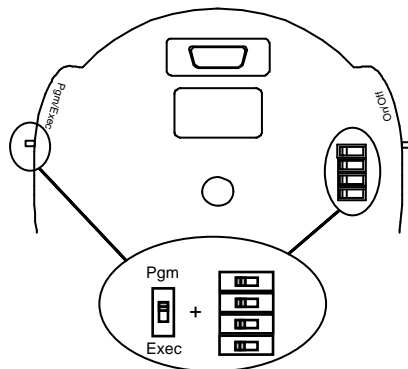


Figure 4.2: Pgm Mode

- Switch On Hemisson (Switch On/Off in On position).
- Click on "Upload" button. Hemisson Uploader will look for Hemisson. As soon as the connection is established, the progress bar will indicate the upload status. The upload is done when your computer emits a Beep
- Switch Off Hemisson (Switch On/Off in Off position).
- Configure robot in Exec mode (see figure below).

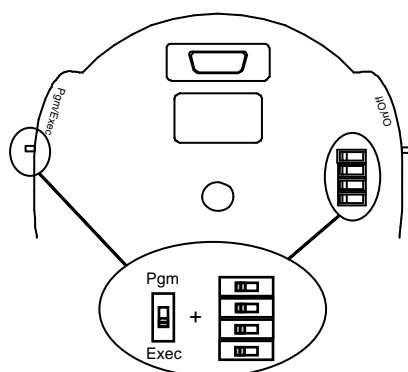


Figure 4.3: Mode Exec

- Switch On Hemisson (Switch On/Off in On position). The robot will execute the uploaded program.

5 FIRMWARE UPGRADE



To upgrade your robot firmware, follow previous indications but select the hemisson firmware .hex file, previously downloaded on Hemisson web site.

6 UNINSTALL



To uninstall *Hemisson Uploader*, click on Start, Parameters, Control Panel, Add-Suppress Programs
Select *Hemisson Uploader* in the list and then click on uninstall.